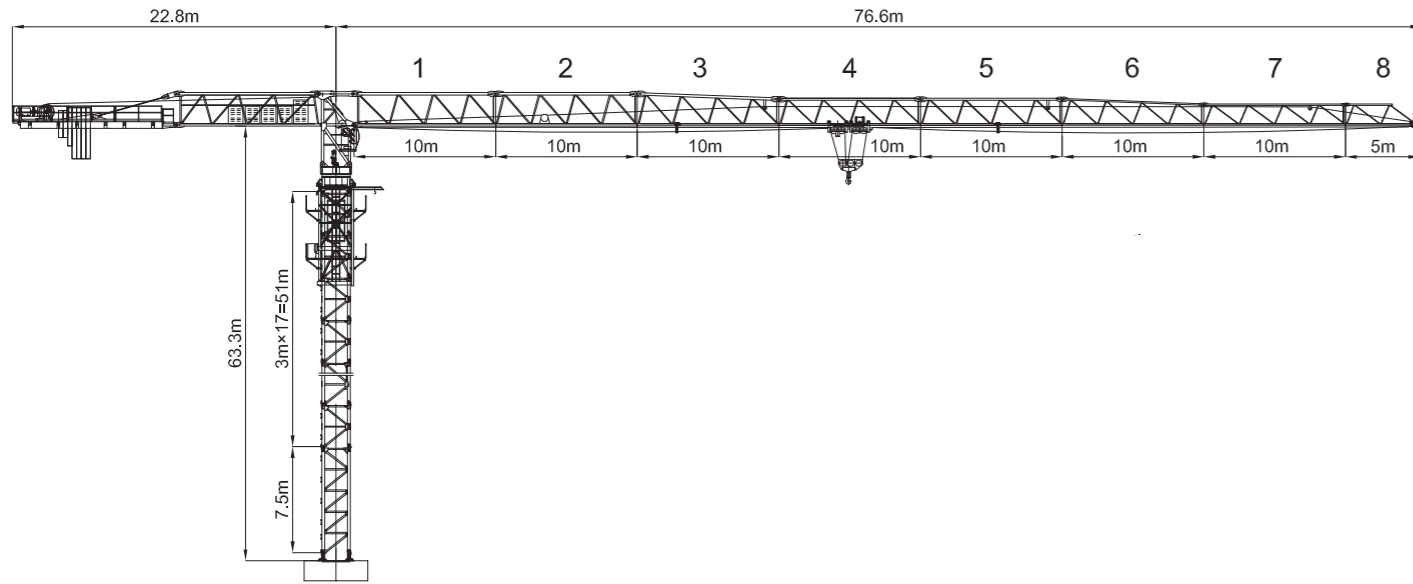


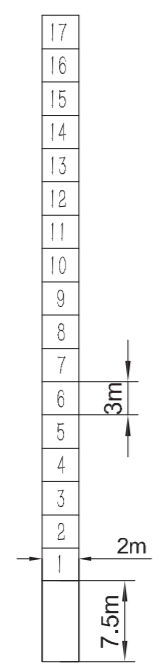
外形尺寸 Outline

18T



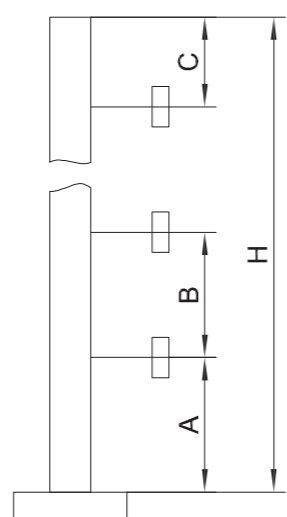
塔身截面 Mast

18T



附着 Anchorages

18T



Mast	A	B	C	H
L69A1	53m	30m	39m	315m

载荷特性表 Load Diagrams

18T

四倍率 Rate IV

75m	R (m)	3.5-16.8	18	20	22	24	26	28	30	32	34	36	38	40	42	44	46	48	50	52	54	56	58	60	62	64	66	68	70	72	74	75
	Loading	18000	16690	14800	13250	11960	11860	9927	9116	8406	7780	7223	6724	6276	5870	5501	5165	4856	4572	4310	4067	3842	3632	3436	3253	3081	2920	2768	2625	2489	2361	2300
70m	R (m)	3.5-17.1	18	20	22	24	26	28	30	32	34	36	38	40	42	44	46	48	50	52	54	56	58	60	62	64	66	68	70			
	Loading	18000	16980	15060	13490	12180	11070	10120	9292	8571	7935	7369	6863	6408	5996	5621	5279	4966	4678	4441	4165	3936	3725	3524	3338	3164	3000	2845	2700			
60m	R (m)	3.5-18.8	19	20	22	24	26	28	30	32	34	36	38	40	42	44	46	48	50	52	54	56	58	60								
	Loading	18000	17790	16790	15060	13620	12400	11350	10440	9651	8951	8329	7773	7272	6891	6407	6031	5686	5369	5076	4805	4553	4319	4100								
50m	R (m)	3.5-19.8	20	22	24	26	28	30	32	34	36	38	40	42	44	46	48	50														
	Loading	18000	17870	16040	14510	13230	12120	11160	10230	9585	8928	8340	7811	7332	6897	6499	6135	5800														

二倍率 Rate II

75m	R (m)	3.5-31.7	32	34	36	38	40	42	44	46	48	50	52	54	56	58	60	62	64	66	68	70	72	74	75
	Loading	9000	8906	8580	7723	7224	6776	6370	6001	5665	5356	5072	4810	4567	4342	4132	3936	3753	3581	3450	3268	3125	2986	2861	2800
70m	R (m)	3.5-32.2	34	36	38	40	42	44	46	48	50	52	54	56	58	60	62	64	66	68	70				
	Loading	9000	8435	7869	7363	6908	6496	6121	5779	5466	5178	4911	4665	4436	4223	4024	3838	3664	3500	3345	3200				
60m	R (m)	3.5-35.4	36	38	40	42	44	46	48	50	53.3	54	56	58	60										
	Loading	9000	8829	8273	7772	7319	6907	6531	6186	5869	5576	5305	5053	4819	4600										
50m	R (m)	3.5-37.4	38	40	42	44	46	48	50																
	Loading	9000	8840	8311	7832	7397	6999	6635	6300																

机构 Mechanisms

18T

名称 Name	工作速度(m/min) Speed	起重量(t) Capacity	容绳量(m) Rope capacity	功率(kW) Power	
起升机构 Hoisting	二倍率 Rate II	0-90	9	800	55
	四倍率 Rate IV	0-45	18		
变幅机构 Trolleying	0-60			11	
回转机构 Slewing	0-0.69			7.5x2	

平衡重 Counter weight

18T

工作幅度(m) Radius	75	70	60	50
平衡重A (piece) Balancing weight A	4	4	4	4
平衡重B (piece) Balancing weight B	1	1	1	
平衡重C (piece) Balancing weight C	2	1		
平衡重总重(Kg) Total balancing weight	27600	25200	22800	19800

A=4950Kg, B=3000Kg, C=2400Kg