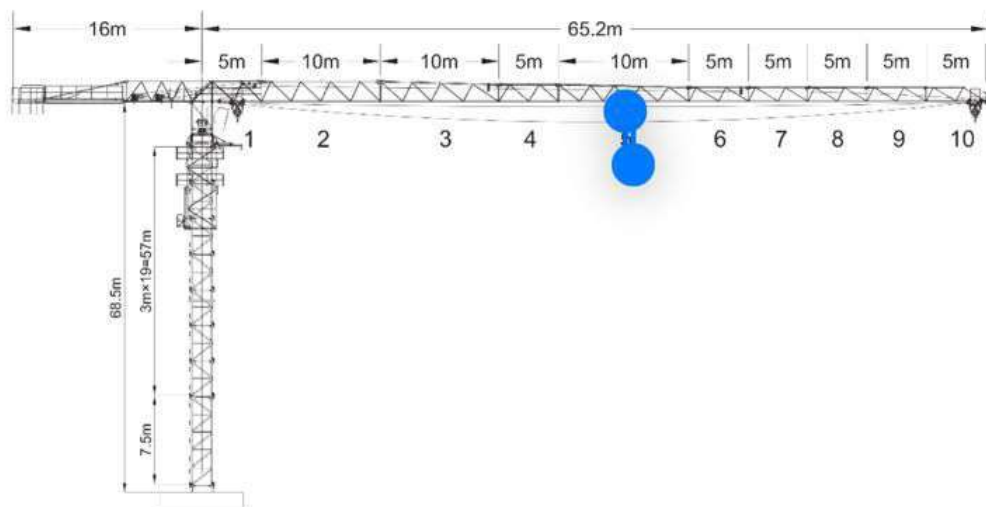


外形尺寸 Outline

10T



塔身截面 Mast

10T

附着 Anchorages

10T

载荷特性表 Load Diagrams

10T

65m		Amplitude (m)	to 26.3				30	35	40	45	50	55	60	65
		Capacity (kg)	5000				4310	3590	3050	2630	2290	2020	1790	1600
		Amplitude (m)	to 13.8	15	20	25	30	35	40	45	50	55	60	65
		Capacity (kg)	10000	9130	6620	5110	4110	3390	2850	2430	2090	1820	1590	1400
60m		Amplitude (m)	to 27.5				30	35	40	45	50	55	60	
		Capacity (kg)	5000				4520	3770	3210	2770	2420	2140	1900	
		Amplitude (m)	to 14.4	15	20	25	30	35	40	45	50	55	60	
		Capacity (kg)	10000	9560	6940	5370	4320	3570	3010	2570	2220	1940	1700	
55m		Amplitude (m)	2.8-30.0				35	40	45	50	55			
		Capacity (kg)	5000				4180	3570	3090	2710	2400			
		Amplitude (m)	to 15.7	20	25	30	35	40	45	50	55			
		Capacity (kg)	10000	7660	5940	4800	3980	3370	2890	2510	2200			
50m		Amplitude (m)	to 27.5				35	40	45	50				
		Capacity (kg)	5000				4450	3800	3300	2900				
		Amplitude (m)	to 16.5	20	25	30	35	40	45	50				
		Capacity (kg)	10000	8130	6320	5110	4250	3600	3100	2700				
45m		Amplitude (m)	to 33.2				35	40	45					
		Capacity (kg)	5000				4700	4030	3500					
		Amplitude (m)	to 17.4	20	25	30	35	40	45					
		Capacity (kg)	10000	8570	6670	5410	4500	3830	3300					
40m		Amplitude (m)	to 34.4				35	40						
		Capacity (kg)	5000				4900	4200						
		Amplitude (m)	to 18.0	20	25	30	35	40						
		Capacity (kg)	10000	8920	6950	5640	4700	4000						
35m		Amplitude (m)	to 35.0											
		Capacity (kg)	5000											
		Amplitude (m)	to 18.3	20	25	30	35							
		Capacity (kg)	10000	9090	7090	5750	4800							